

AIRTEK

Products Brochure

We bring you

- **Competitive price**
- **Best technical service**
- **Solutions for diverse applications**



The senior BACnet device manufacturer from Taiwan



● About AIRTEK

● Product overview

- Workstation series / Powerful buildings management platform
- WC series / Building controller with web server
- GC series / Global building controller
- DAC series / Advanced zone controller
- DSC series / Local device controller
- EIM series / Expansion IO module
- HMI series / BACnet, Modbus network touch panel
- VAV series / Variable air volume system
- FCU series / Fan coil unit system
- Gateway series / Communication data translate to BACnet system

Profile

AIRTEK was established in 1987 and has more than 35 years of experience in building control system design & integrated product manufacturing.

And focus on research and development, scalable and highly flexible building intelligent control solutions, products and services. By establishing a solid partnership with customers and dealers, AIRTEK has maintained a growth trend of constant change and innovation.

Our aim is to provide clients with :

Competitive Price

Best technical service

The most flexible application function

Open

Based on the open BACnet protocol, removing unnecessary system restrictions, and with years of practical integration experience, AIRTEK products have a high degree of system compatibility & scalability.

Elasticity

Transform the practical experience of serving customers and dealers for many years into various product functions, and accept customized requirements, so that the products are highly flexible to meet the various applications of customers.

Value

Products are classified according to concepts suitable for various sizes and functions. In AIRTEK, you can always combine various products to create the most suitable and cost-effective system architecture.

Efficiency

Based on our own experience in the application of domestic and foreign products, we think about how to improve the efficiency of system engineers and operators in product design, so as to greatly save the time of system debugging and operation.

Airtek Partner



Service items

AIRTEK makes buildings smart. We provide solutions and services that connect all building controls and systems to achieve efficient building operations through building automation. Advanced building automation solutions enable owners and managers to operate more efficient, energy-efficient buildings. AIRTEK provides all aspects of planning, design, construction and ongoing management, upgrading and customization of buildings and facilities.

AIRTEK provides various services and solutions

Regardless of the type, scale of construction project or functional requirements, AIRTEK's professional design, engineering, and R&D teams are happy to assist you.

Building automation system



The open and scalable (from small to large) product line and design method can help owners build a building control automation system that best meets their needs with the smallest budget and required functions, including dynamic group management, real-time alarm notifications, etc.

- Open BACnet system
- Friendly and effective interface
- Flexible product grading
- Cloud monitoring and management

Energy management system



Proactively report and optimize your facility's energy performance and comfort. Use the right energy analysis data to proactively make decisions to reduce operating costs and achieve your energy and sustainability goals.

- Energy analysis visualization
- Energy consumption and load prediction
- Tenant billing management
- Energy saving improvement and measurement

Renovation, upgrade and replacement



A professional engineering team with many years of experience can assist in the evaluation and upgrade of old and third-party systems. Retrofit or replace to ensure your building management system adopts the latest technology and performs optimally to save management time and improve energy efficiency.

- Partial system replacement
- Integration of multiple systems
- Software and firmware upgrade
- Functional modification and improvement

Full period support



It can provide support at all stages of the entire life cycle of the building control system; from design and construction to warranty, maintenance and upgrades, each stage focuses on cost-effectiveness and high-level performance to ensure the continued operation and growth of the system as scheduled and with high quality.

- System planning and design
- Construction testing and debugging
- Online and offline maintenance
- Continuous optimization and adjustment

Special needs development



A complete software and hardware R&D team can support the development of various required application software and products. You only need to contact us with your ideas, and we can help you realize the solution that best meets your actual needs.

- Software function development
- Firmware function development
- Hardware product development
- Integrate demand development

System that easily integrates with other systems.

Build the system you want by seamlessly integrating our building automation and energy management systems with any of your existing building systems.

Features

- BACnet BTL B-AWS certified.
- Web Server 、BEMS 、Chart/Report.
- Standard for BACnet eth/IP, where is no points limit.
- OnVIF profile-S RTSP support, for integrate CCTV video.
- Modbus RTU,TCP,API, MQTT can support by additional license.
- Online license Upgradeable, requirement addition can satisfy by upgrade.
- Database Replication, SSL encryption, Software watchdog, safety and reliability.
- Area function, makes each user/ client has Unique operation area in one project.
- Leveled by different function and device number, fit any system and budget needs.
- Prolific design resource and demo project, makes project startup quick and easy.
- Multi media alarm notify: LINE 、SMS, WhatsApp, Telegram, Email, with alarm analyze tool.
- Many kinds of report application: email, excel, PDF, customized excel (cell link system data).

BACsoft-AWS-16/32/64/128/256/512/1K/3K-S/W/WB

- “ -S/W/WB ” means different function needs.
- A powerful building control and management workstation.
- “ -16/32/64/128/256/512/1K/3K ” means support bacnet device numbers.

BACsoft-nBP-XS/S/M/L

- “ -XS/S/M/L ” means different points number.
- Non BACnet point integrate license, include Modbus RTU master ,TCP client, API, MQTT.
- License just limit the total points number, User can defined each protocol points number used by self.

Product Info.

| Series difference | BACsoft-AWS-16/32/64/128/256/512/1K/3K-S/W/WB |
|--------------------|---|
| Function & spec | |
| Device Number | 16 /32 /64 /128 /256 /512 /1000 /3000 |
| Web Server | -S(X) / -W(V) / -WB(V) |
| BEMS data analysis | -S(X) / -W(X) / -WB(V) |

※ when license upgrade, just need pay for the price differecial.

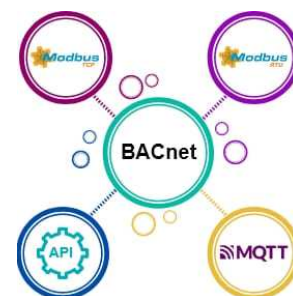


BACsoft-AWS

Product Info.

| Series difference | BACsoft-nBP-XS/S/M/L |
|--------------------------|--|
| Function & spec | |
| Non BACnet points number | -XS (100)/ -S(200) / -M(500) /-L(1000) |

※ when license upgrade, just need pay for the price differecial.



BACsoft-nBP

Benefit



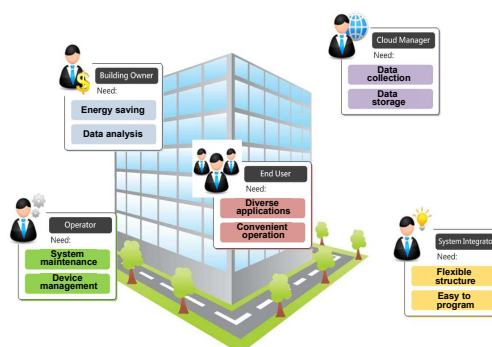
BACsoft-AWS



BACsoft-OWS



Easily manage any BACnet system with BACsoft-OWS/AWS



Provide better and convenient functions for users of different aspects of the building system

Building Owner (Security & Reliability) (Data analysis)

- Building owner always care about the cost for building usage and system reliability, BACsoft have many kinds of way to make and send chart and report to different kind of building owner or manager, it will help with data analyze and decision making of energy saving or usage management, all the data analyze chart and report also can check on web anytime and anywhere. BACsoft support SSL encryption and software watchdog, to make it more security and reliability.



Automatic report delivery



Alert Analysis Statistics



System backup function



SSL security encryption



Standard API integration

System Operator (System maintain) (Co-work with different Operator)

- System operators are the main user for the system workstation, they always needs the way to know and solve system issue ASAP to ensure system work normally, bacsoft have many ways to let operators get alarms and send command quickly to solve issue, and offer include memo, messenger and many function to make coworking easily between different system operators.



Multimedia alert notification



User-defined action list



Multi-selection control and statistics



Weather Information Integration



Live video streaming

System Integrator (function flexible) (Agile development)

- AIRTEK be the one of the system integrator, which knows time is the most heavy cost to make a system project, so BACsoft is design to improvement the efficacy for all the works of project build life. include plan, design, and maintain. it will makes SI design and done a project quickly and easily, and also can modify project fastly for all the customers needs after project finished. that will save incredible time used for system Integrator.



High portability of project data



Design resource reuse



Dynamic picture page



Multiple choice settings



Search replace

End User (Diverse applications) (User friendly)

- BACsoft is a workstation based on Web Server, it allows many different kinds of client to use, from building owner, system operator, zone manager, end device user and message receiver. All of them can login to use. Different users need different function, interface, application, permissions and activity area. BACsoft allow to set and design unique and friendly operation environment for all kinds of client and user in one project.



High portability of project data



Design resource reuse



Dynamic picture page



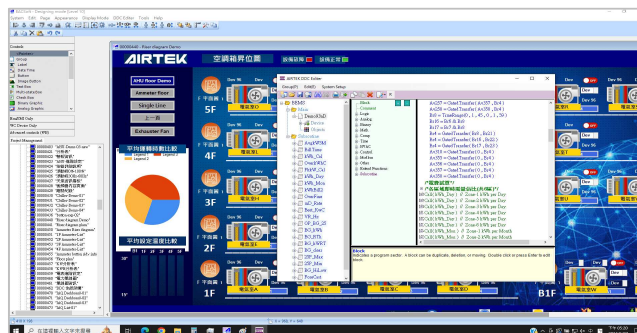
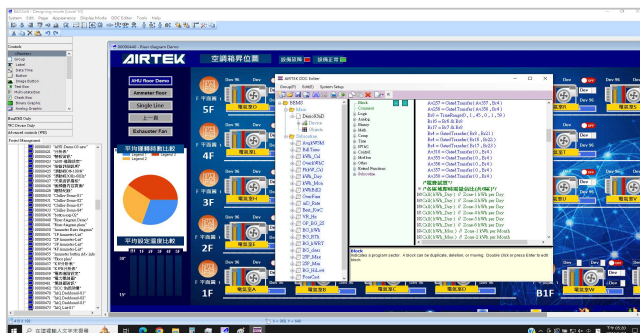
Multiple choice settings



Search replace

Build-in DDC Program editor

- Easy program tool, take very short learning period.
- Real-time mode help to check program running state.
- Function block based but show as command line, help to view the global logic.
- Points/objects explore, search & find will help to find out any points state quickly.
- Communication record can show modbus frame help to analysis the integration issue.
- Repeat copy/paste command help to create same logic but different input/output function quickly.
- Subroutine help design reused and save program memory. and it also support repeat copy/paste.
- Program comment save in controller, help to understand when loading program from unknown controller.



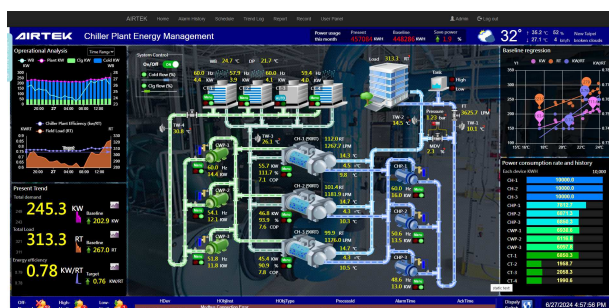
Easily project design editor

- Group select/setting make modify display easy.
- Display copy /template Makes design resource reused quickly.
- Demo mode can used all function without license, help to study quickly.
- Repeat copy/paste command help to create same objects but different ID points.
- BACsoft-AWS/OWS, HMI, Web controller, all can design in same Environment, easy to learn and management.
- Design Record, Find/search, Device scan, advanced object tool, security & area..etc, many kind of tool and function will makes project create, modify quick and easy.



Powerful running mode on Web

- User panel help use to edit unique control list and group by self on web page.
- Multi-select/command help operator to command random group items quickly.
- Device communication quality monitor and notify will shows the system health real-time.
- Text, data, chart, report, alarm, animation, video All items can layout free and mixed to show on one web page.
- Alarm count, filter, history, analyzer, page jump, multi-media notify, many alarm functions and tool help to get system issue and solve it ASAP.
- Log filter help data Cleaning, active Regression, many kind of chart, customize report export way (email, csv, pdf, google drive etc..) make big data analysis quick and easy.



Features

- BACnet BTL B-BC certified.
- Web Server 、BEMS 、Chart/Report.
- On board I/O with auto/manual switch.
- Programmable 、online firmware updateable.
- Can work with auto backup tool, more reliability.
- Internet Application: LINE 、Email 、Google drive.
- Modbus RTU 、TCP 、API 、BACnet MSTP 、eth/IP.
- Expansion I/O connect port 、field HMI connect port.
- Embedded ethernet Hub, can connect by ethernet daisy-chain.



• WC-RB10-U • WC-RB11-U



• WC-RB12-U • WC-RB12-S

• WC8846P • WC8846P-S

WC-RB10-U Local SCADA to upgrade with Web monitor & BEMS.

WC-RB11-U Local SCADA to upgrade with Web monitor & BEMS, and expansion system.

WC-RB12-U Completely system function, can be a building SCADA without PC/workstation.

WC-RB12-S Function same as WC-RB12-U but less software resource, fit with small system/budget.

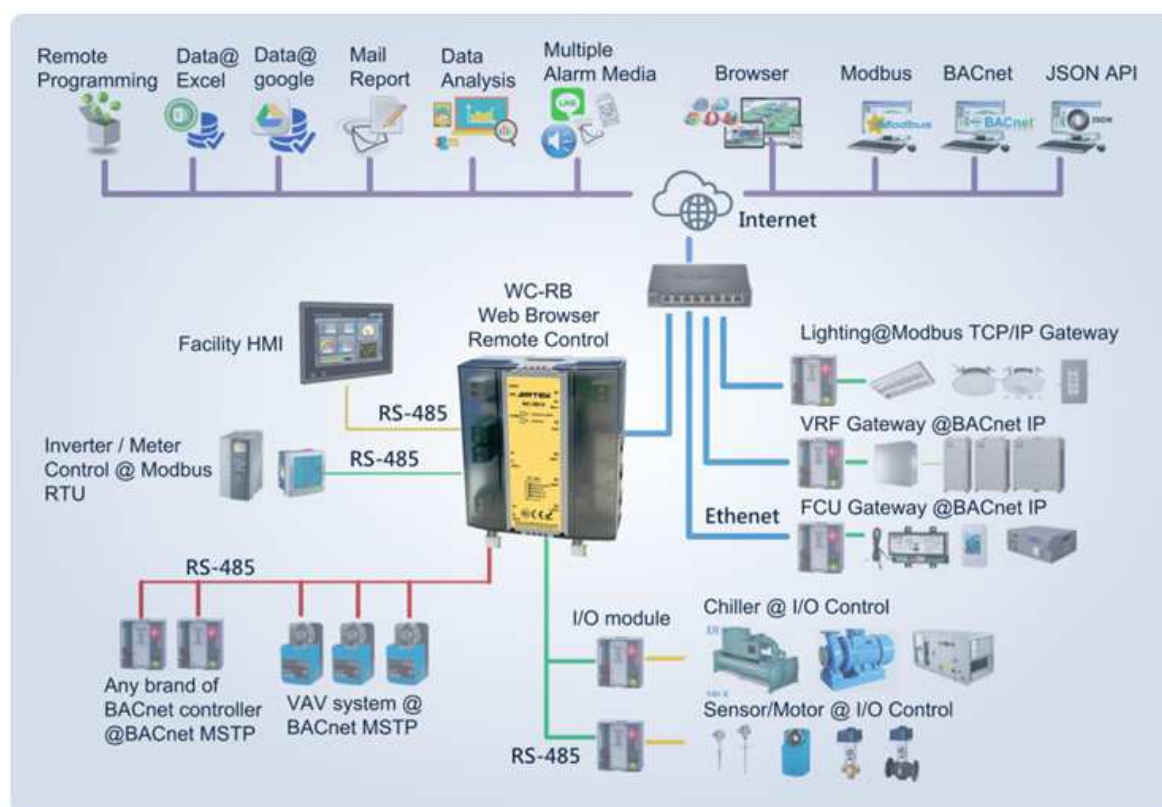
WC8846P Completely system function With I/O, economic choice when points fit.

WC8846P-S Function same as WC8846P but less software resource fit with small system/budget.

Product Info.

| Series difference | WC-RB10-U | WC-RB11-U | WC-RB12-U | WC-RB12-S | WC8846P | WC8846P-S |
|--------------------------------|-----------|-----------|-----------|-----------|-----------------|-----------------|
| Communication & I/O | | | | | | |
| On board I/O | X | X | X | X | 8BI,8AI,4BO,6AO | 8BI,8AI,4BO,6AO |
| Expansion I/O port | X | 24 EIM* | 24 EIM* | 4 EIM* | 24 EIM* | 12 EIM* |
| Modbus RTU | X | V | V | V | V | V |
| Modbus TCP | V | V | V | V | V | V |
| BACnet Ethernet/IP | V | V | V | V | V | V |
| BACnet MSTP | X | X | 32 dev | 4 dev | V | V |
| Software resource | | | | | | |
| Schedule/Alarm/Trendlog | 200.each | 400.each | 800.each | 10.each | 200.each | 20.each |
| Av/Bv | 2000.each | 2000.each | 2000.each | 1000.each | 1000.each | 1000.each |

※ EIM = Expansion I/O module



Features

- BACnet BTL B-BC Certified.
- On board I/O with auto/manual switch.
- Programmable \ online firmware updateable.
- Modbus RTU \ BACnet MSTP \ BACnet Eth/IP.
- Expansion I/O connect port \ field HMI connect port.
- Many different grade to fits every budget/system needs.
- Embedded ethernet Hub, can connect by ethernet daisy-chain.



GC-DB01-x

GC-RB01-x



GC8846-x • GC8846P-x

GC-DB01-L/M/S For building low-budget full-BACnet Eth/IP network systems.

GC-RB01-L/M/S Routing controller to integrate BACnet MSTP LAN.

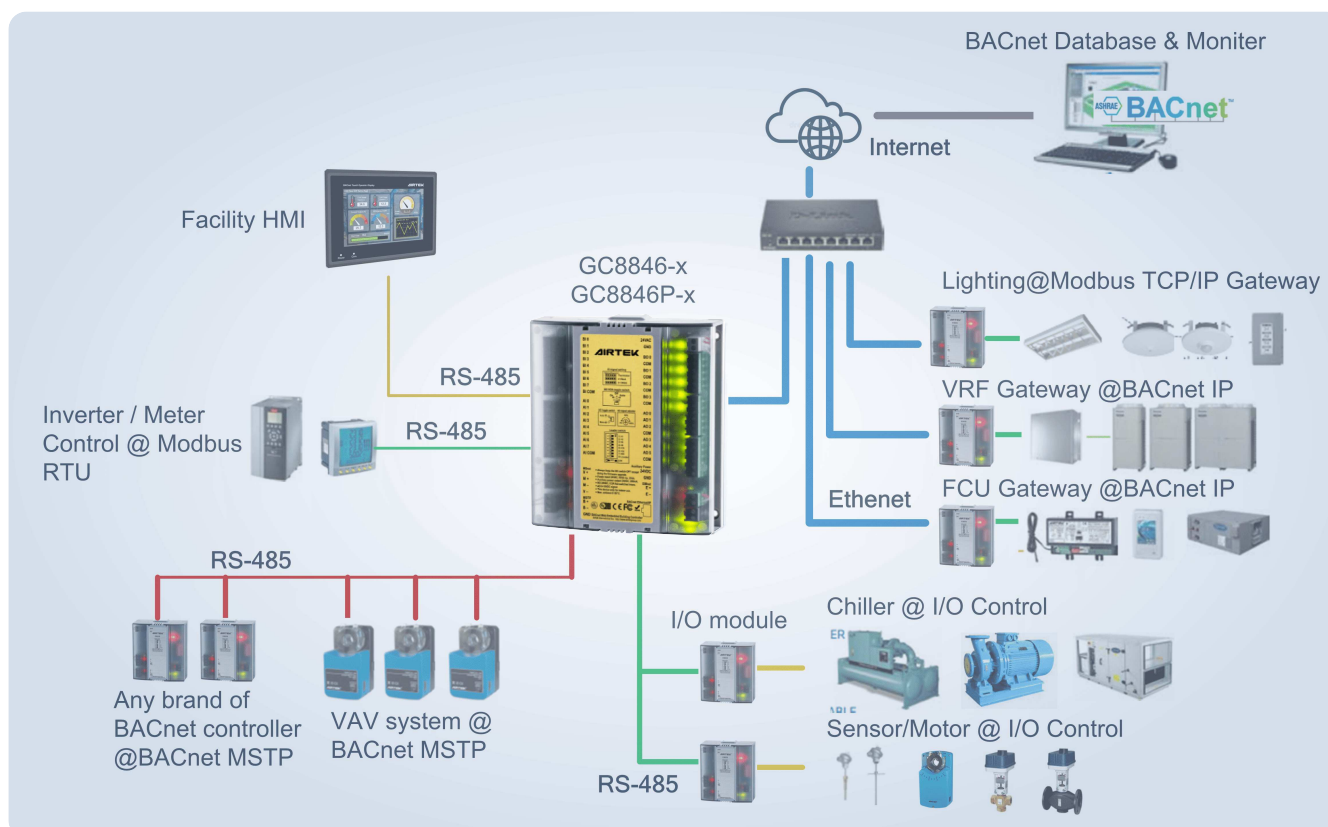
GC8846/-S Function same as GC-DB01and with I/O, a complete global controller.

GC8846P/-S A complete global contrOller with BACnet MSTP LAN route function.

Product Info.

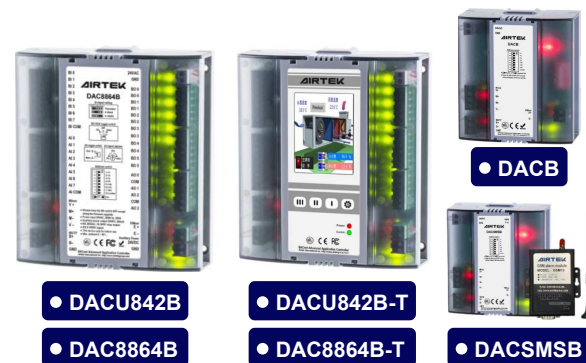
| Series difference | GC-DB01-L/M/S | GC-RB01-L/M/S | GC8846/-S | GC8846P/-S |
|--------------------------------|----------------|----------------|-----------------|-----------------|
| Communication & I/O | | | | |
| On borad I/O | X | X | 8BI,8AI,4BO,6AO | 8BI,8AI,4BO,6AO |
| Expansion I/O port | 24/12/6 EIM* | X | 24/12 EIM | 24/12 EIM |
| Modbus RTU | X | X | V | V |
| BACnet Ethernet/IP | V | V | V | V |
| BACnet MSTP | X | 64/32/16 dev | X | 32/4 dev |
| Software resource | | | | |
| Schedule/Alarm/Trendlog | 100/50/10.each | 100/50/10.each | 100/20.each | 100/20.each |
| Av/Bv | 2000.each | 1000.each | 1000.each | 1000.each |

※ EIM = Expansion I/O module



Features

- BACnet BTL B-AAC Certified.
- Modbus RTU \ BACnet MSTP.
- On board I/O with auto/manual switch.
- Programmable \ online firmware updateable.
- With schedule, alarm, extern data accessible.
- Many types model to fits different I/O group need.
- Expansion I/O connect port \ field HMI connect port.
- Embedded touch screen ,field control without extern HMI.



DACU842B/-T With I/O, embedded touch screen, an economically zone control solution.

DAC8864B/-T More I/O points, embedded touch screen, zone control solution.

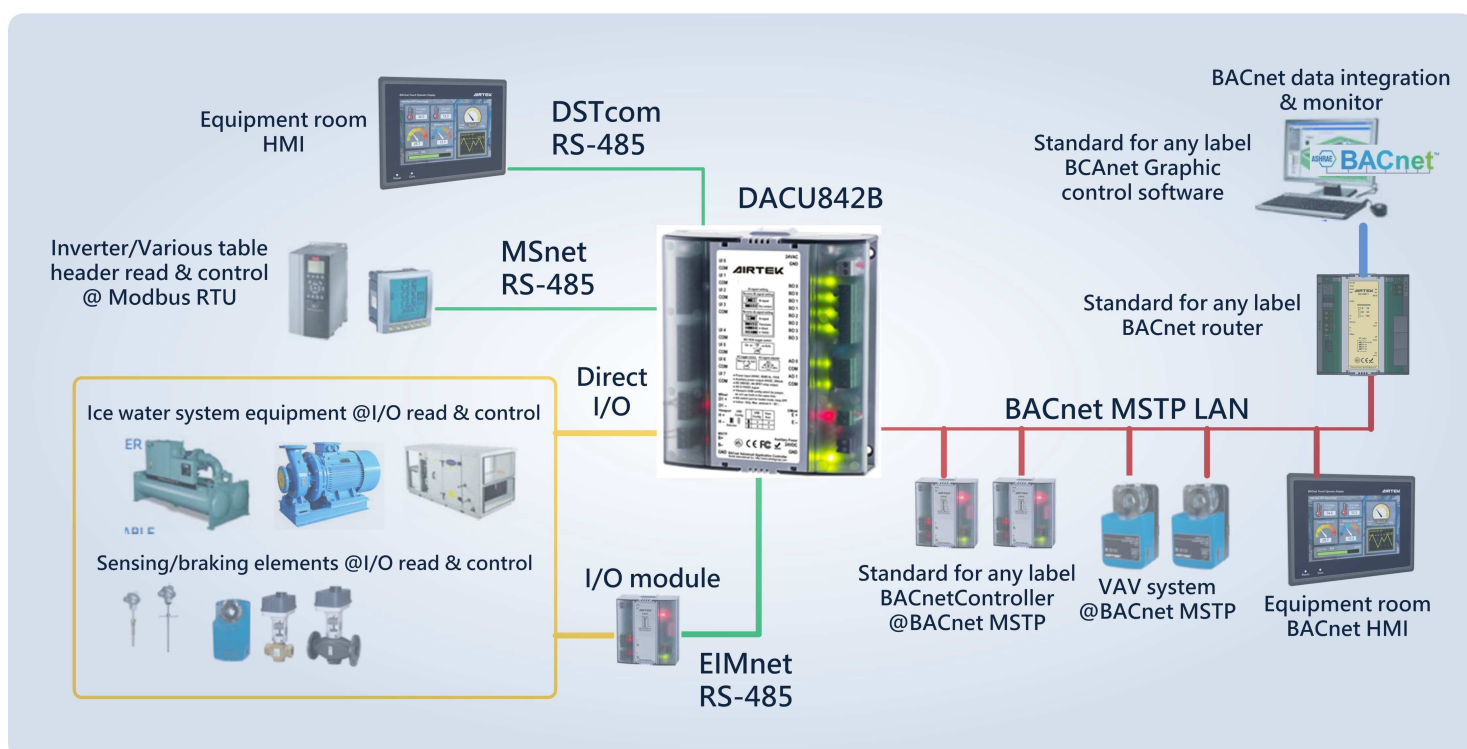
DACB Without I/O points, which used expansion IO modules to meet the application and budget needs.

DACSMSB Same as DACB and with SMS message send/receive , that can get alarm by SMS message.

Product Info.

| Series difference | DACU842B/-T | DAC8864B/-T | DACB | DACSMSB |
|-----------------------|-------------|-----------------|----------|----------|
| Communication & I/O | | | | |
| On board I/O | 8UI,4BO,2AO | 8BI,8AI,6BO,4AO | X | X |
| Expansion I/O port | 12 EIM | 12 EIM | 12 EIM | 12 EIM |
| Modbus RTU | V | V | V | V |
| BACnet MSTP | V | V | V | V |
| Embedded touch screen | X/2.8" TFT | X/2.8" TFT | X | X |
| SMS message | X | X | X | 4G SMS |
| Software resource | | | | |
| Schedule/Alarm | 20.each | 20.each | 20.each | 20.each |
| Av/Bv | 150.each | 150.each | 150.each | 150.each |

※ EIM = Expansion I/O module



Features

- BACnet BTL B-ASC certified.
- Modbus RTU \ BACnet MSTP.
- On board I/O with auto/manual switch.
- Programmable \ online firmware updateable.
- Many types model to fits different I/O group need.
- Expansion I/O connect port \ field HMI connect port.
- Embedded touch screen ,field control without extern HMI.
- Just gives basically function with local control for low budget.



DSCU842B



DSCU842B-T



DSCB

DSC4211B

DSC0080B

DSC24000B

DSCU842B/-T With I/O, embedded touch screen, an economically Local device control solution.

DSC8864B/-T More I/O points, embedded touch screen, local device control solution.

DSCB Without I/O points, which used expansion IO modules to meet the I/O points and budget needs.

DSC4211B Tiny I/O points, without Expansion I/O port, The local device control solution with lowest budget.

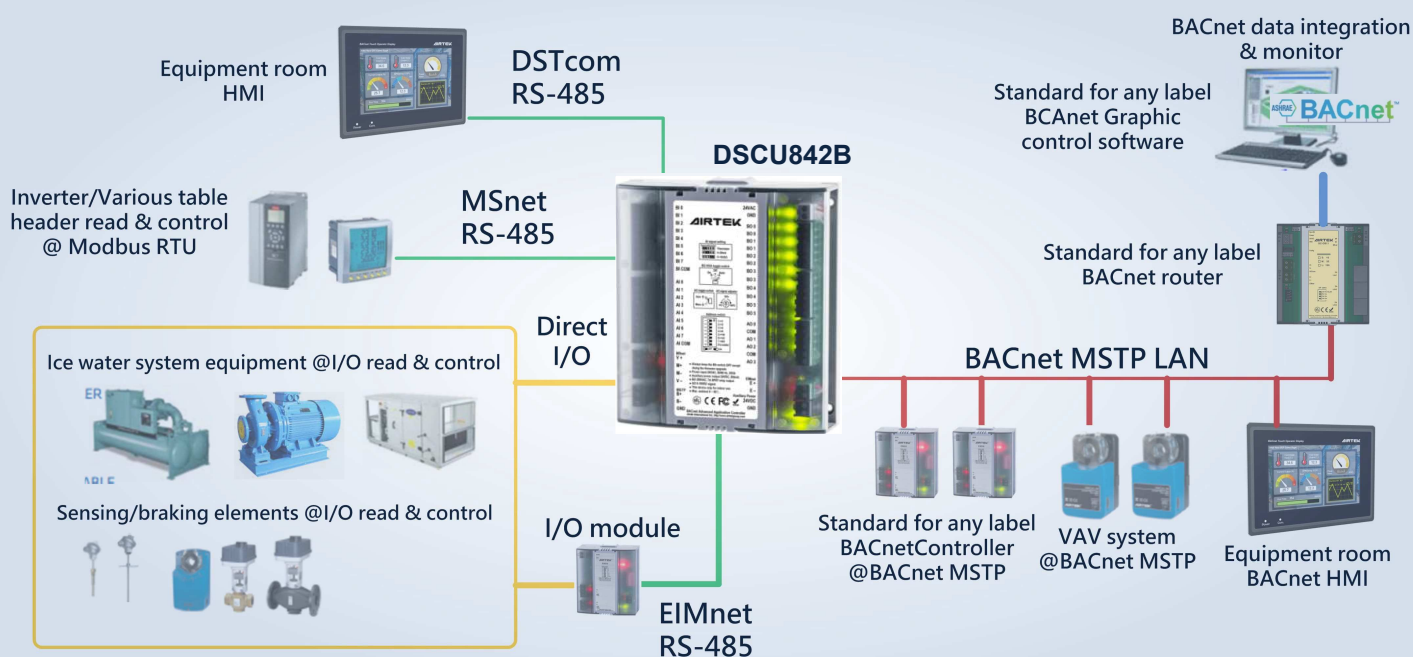
DSC0080B Big BO points \ Dedicated to control many device on/off.

DSC24000B Large BI points, dedicated to monitoring many digital status points.

Product Info.

| Series difference | DSCU842B/-T | DSC8864B/-T | DSCB | DSC4211B | DSC24000B | DSC0080B |
|-----------------------|-------------|-----------------|----------|----------------|-----------|----------|
| Communication & I/O | | | | | | |
| On board I/O | 8UI,4BO,2AO | 8BI,8AI,6BO,4AO | X | 4BI2AI,1BO,1AO | 24BI | 8BO |
| Expansion I/O port | 12 EIM | 12 EIM | 12 EIM | X | X | 12 EIM |
| Modbus RTU | V | V | V | V | X | X |
| BACnet MSTP | V | V | V | V | V | V |
| Embedded touch screen | X/2.8" TFT | X/2.8" TFT | X | X | X | X |
| Software resource | | | | | | |
| Av/Bv | 100.each | 100.each | 100.each | 100.each | 100.each | 100.each |

※ EIM = Expansion I/O module



Features

- Modbus RTU compatible.
- I/O with auto/manual switch.
- Plug and used without and setting.
- A model dedicated to pulse input (PI).
- Many points type for different applications.
- A model dedicated to translate Modbus RTU as EIM I/O data.

- EIM8000M
- EIM0040M
- EIM0080M
- EIM4020M
- EIM0402M
- EIM24000M
- EIMP800M
- EIM800M
- EIM004M
- EIMXM



EIM0800M Normal analog input module, 12 bits resolution, 3K / 10KΩ NTC , 0~10VDC, or 4~20mA input signal.

EIM0004M Small analog output module, 12 bits resolution, 0-10 / 2-10 VDC output, auto / manual switches.

EIM4020M Binary / analog Mixed Input module.

EIM0402M Binary / analog Mixed Output module, AO can select 0/2-10VDC or 0/4-20mA by DIP switch.

EIMP800M Pulse Input module, accept up to 100Hz PWM signal or dry contact.

EIM0040M/EIM0080M Small / normal binary output module, SPST dry contact relay, 5000Vrms isolates, auto / manual switches.

EIM8000M/EIM24000M Normal / Large binary input module, dry contact input with 5000 Vrms optical coupling isolates.

EIMXM Modbus RTU data translate module, accept simulate up to 4 different type EIM.

Product Info.

| Series difference | EIM8000M | EIM24000M | EIM0800M | EIM0040M | EIM0080M | EIM0004M | EIM4020M | EIM0402M | EIMP800M |
|-------------------|----------|-----------|----------|----------|----------|----------|----------|------------|------------|
| I/O quantity | | | | | | | | | |
| BI | 8 | 24 | 0 | 0 | 0 | 0 | 4 | 0 | 0 |
| AI | 0 | 0 | 8 | 0 | 0 | 0 | 0 | 4 | 0 |
| BO | 0 | 0 | 0 | 4 | 0 | 0 | 2 | 0 | 0 |
| AO | 0 | 0 | 0 | 0 | 8 | 4 (VDC) | 0 | 2 (VDC/mA) | 0 |
| PI | 0 | 0 | 0 | 0 | 0 | 0 | 0 | 0 | 8 (100 Hz) |

HMI series / BACnet, Modbus network touch panel

Features

- Panel with 2.8",3.5",7.0" different size.
- NVT series with BACnet BTL B-OD certified.
- NVT series support BACnet Eth,IP or MS/TP.
- DST(-G) series cOmpatible with Modbus RTU.
- NVT70P/PE support to edit external BACnet schedule objects.
- 7.0" series with quick wall-mounted snap-in clip for easy installation.
- Active display support, same layout/different data just need one page.
- Plug and used, when DST series used with AIRTEK series controllers.
- Project edit same as bacsoft edit, no need different tool, easy to learn/use.
- 2.8" Product integrated temperature and humidity + CO2-IAQ Sensing function.



• NVT70P/E • DST70P/-G



• NVT35U



• DST35U/-G

NVT70P/E BTL B-OD certified, BACnet MSTP/ BACnet Eth,IP, schedule edit, 7.0" touch screen.

NVT35U BTL B-OD certified, BACnet MSTP, 3.5" touch screen.

DST70P/-G AIRTEK Msnet/ Modbus RTU, 7.0" touch screen.

DST35U/-G AIRTEK Msnet/ Modbus RTU, 3.5" touch screen.

Product Info.

| Series difference | DST35U | DST35U-G | DST70P | DST70P-G | NVT35U | NVT70P | NVT70PE |
|------------------------|--------------|--------------|--------------|--------------|--------------|--------------|--------------|
| Communication & spec. | | | | | | | |
| AIRTEK MSnet | V | X | V | X | X | X | X |
| Modbus RTU | X | V | X | V | X | X | X |
| BACnet MSTP | X | X | X | X | V | V | V |
| BACnet Eth/IP | X | X | X | X | X | X | V |
| BACnet Schedule RW | X | X | X | X | X | V | V |
| Screen size/resolution | 3.5"/320*240 | 3.5"/320*240 | 7.0"/800*480 | 7.0"/800*480 | 3.5"/320*240 | 7.0"/800*480 | 7.0"/800*480 |

Features

- Damper controller Modbus RTU compatible.
- Damper controller with BACnet BTL-ASC certified.
- Controller default with standard VAV DDC program.
- Damper controller Integrate NTC and pressure sensor.
- Integrated design of damper & controller, 5NM/10NM two type.
- Controller have no I/O 、on board I/O type, support external I/O.
- Public zone can design as temp sensor+group panel to save budget.



DSCVB-5NM

Air volume box control with 5NM torque damper.

DSCVB-10NM

Air volume box control with 10NM torque damper.

DSCV232B-10NM

10NM damper with I/O, support for Auxiliary fan/hot valve, electric heater reheating control.

MST32V

Single VAV LCD Thermostat.

NST32V

Group VAV LCD Thermostat , up to monitor 32 VAV controller.

TSR2000

10K NTC sensor, wall mount, for public zone VAV control that no on-site operation needs.



[Product Info.](#)

| Series difference | DSCVB-5NM | DSCVB-10NM | DSCV232B-10NM |
|---------------------|-------------|--------------|---------------|
| Communication & I/O | | | |
| On board I/O | X | X | 2UI,3BO,2AO |
| Expansion I/O port | 12 EIM | 12 EIM | 12 EIM |
| Modbus RTU | V | V | V |
| BACnet MSTP | V | V | V |
| 10K NTC sensor | V | V | V |
| Pressure sensor | 500pa±4% | 500pa±4% | 500pa±4% |
| Damper | 5NM/70~100s | 10NM/90~120s | 10NM/90~120s |
| Software resource | | | |
| Av/Bv | 100 | 100 | 100 |

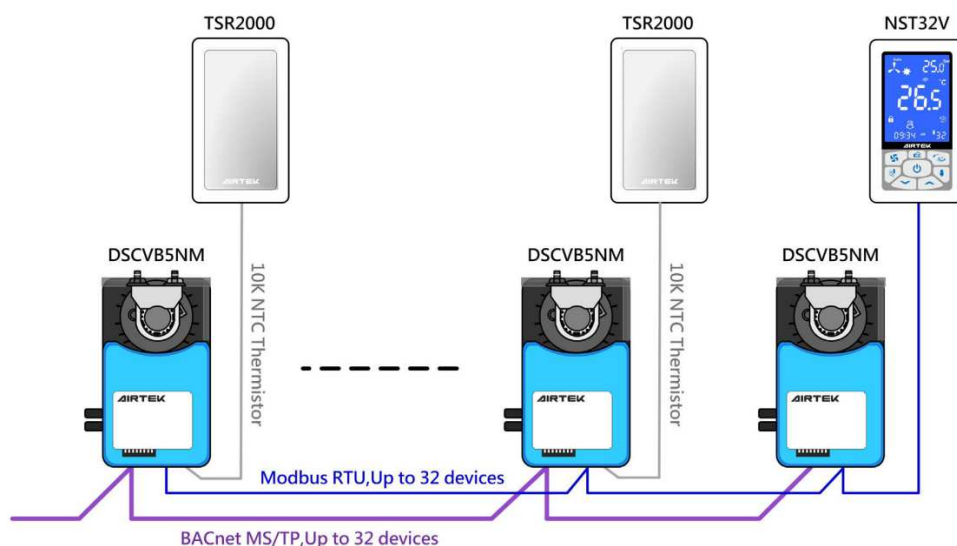
※ EIM = Expansion I/O module

Application scenarios



No panel/single panel/group + single panel/graphical man-machine / cloud operation(browser & App).....,AIRTEK's flexible system architecture can meet the above usage scenarios.

- Public area
- On-site monitoring
- Cloud management



Features

- BACnet MSTP, Modbus RTU
- 2*BI for occupied/water-full detect .
- BACnet FCU controller BACnet BTL-ASC certified.
- Single/group LCD or TFT colorful touch screen thermostat.
- 2*BO for 4-pipe/ floating valve, 2-pipe+chiller-linked control.
- Gateway compatible As B-AAC function, and programmable.
- Colorful thermostat with IAQ sensing & graphic play function.
- Dedicated Gateway can integrate FCU system to BACnet easily.
- AO 0~10V output 、AI input 、 for DC-Fan or modulate valve control.
- Gateway with FCU operation state statistics/ group control functions.
- Bacnet controller default FCU standard DDC program, customizable.



DSF1150B(M)-AC/DC

BACnet BTL-ASC certified, Programmable, with AI/AO, for DC-Fan/ modulate valve control.

DFD0140A

Modbus RTU, for 2-pipe cooling or heating valve control.

DFD2150A/-CH/-FL

Modbus RTU, for 4-pipe/2-pipe++chiller-linked/ floating valve control, with 2*BI.

NFC32V/MFC32V

Single/group LCD thermostat.

MFT28U(-Q)/NFT28U(-Q)

Single/group colorful touch screen thermostat, with IAQ sensing & graphic play function.

PF-PM11/PF-BM12

Dedicated FCU to BACnet Gateway, with FCU operation state statistics/ group control functions.

Product Info.

| Series difference | DSF1150B(M)-AC | DSF1150B(M)-DC | DFD0140A | DFD2150A | DFD2150A-CH | DFD2150A-FL |
|---------------------|-----------------------------|-----------------------------|----------------|----------------|-------------------------|----------------------------|
| Communication & I/O | | | | | | |
| Protocol | BACnet MSTP (Modbus RTU) | BACnet MSTP (Modbus RTU) | Modbus RTU | Modbus RTU | Modbus RTU | Modbus RTU |
| BI | 2 | 2 | 0 | 2 | 2 | 2 |
| AI | 0 | 2 | 0 | 0 | 0 | 0 |
| BO | 5 | 5 | 3(Fan)+1(val) | 3(Fan)+2(val) | 3(Fan) +1(val)+1(CH) | 3(Fan) +2(floating val) |
| AO | 0 | 2 | 0 | 0 | 0 | 0 |
| Programable | V | V | X | X | X | X |
| Series difference | MFC32V | NFC32V | MFT28U | NFT28U | MFT28U-Q | NFT28U-Q |
| Function & spec | | | | | | |
| Control | Single | Group | Single | Group | Single | Group |
| Display | LCD | LCD | Touch TFT 2.8" | Touch TFT 2.8" | Touch TFT 2.8" | Touch TFT 2.8" |
| IAQ sensor | X | X | X | X | V | V |
| Graphic play | X | X | V | V | V | V |
| Series difference | PF-PM11 | | | PF-BM12 | | |
| Function & spec | | | | | | |
| FCUnet LAN | 1 | | | 2 | | |
| BACnet MSTP | V | | | X | | |
| Modbus RTU | V | | | X | | |
| BACnet Eth/IP | X | | | V | | |
| Modbus TCP | X | | | V | | |
| Software resource | | | | | | |
| Schedule & Alarm | 20/10 | | | 16/16 | | |
| AV & BV | 100 .each | | | 200. each | | |

Features

- BACnet BTL-AAC compatible.
- Simple data translate table in DDC editor, easy to learn and use.
- Leveled by points and objects number, for any budget/system needs.
- With Modbus frame record function, makes integrate issue solved easily.
- Schedule/alarm, programmable, data integration & control needs on one device.
- Dedicated Panasonic VRF Gateway, for Panasonic VRF to Modbus TCP or BACnet Eth/IP.



- PV-BM11/21
- PC-MP11-XS/S/M/L(-N)
- PC-ME11-XS/S/M/L(-N)
- PC-ME10-XS/S/M/L(-N)

| | |
|-----------------------------|--|
| PV-BM11/21 | Panasonic VRF system to BACnet Eth/IP & Modbus TCP server Gateway, non programmable. |
| PC-MP11-XS/S/M/L(-N) | Modbus RTU to BACnet MS/TP Gateway, (-N) means non programmable. |
| PC-ME11-XS/S/M/L(-N) | Modbus RTU to BACnet Eth/IP & Modbus TCP server Gateway, (-N) means non programmable. |
| PC-ME10-XS/S/M/L(-N) | Modbus TCP Client to BACnet Eth/IP & Modbus TCP server Gateway, (-N) means non programmable. |



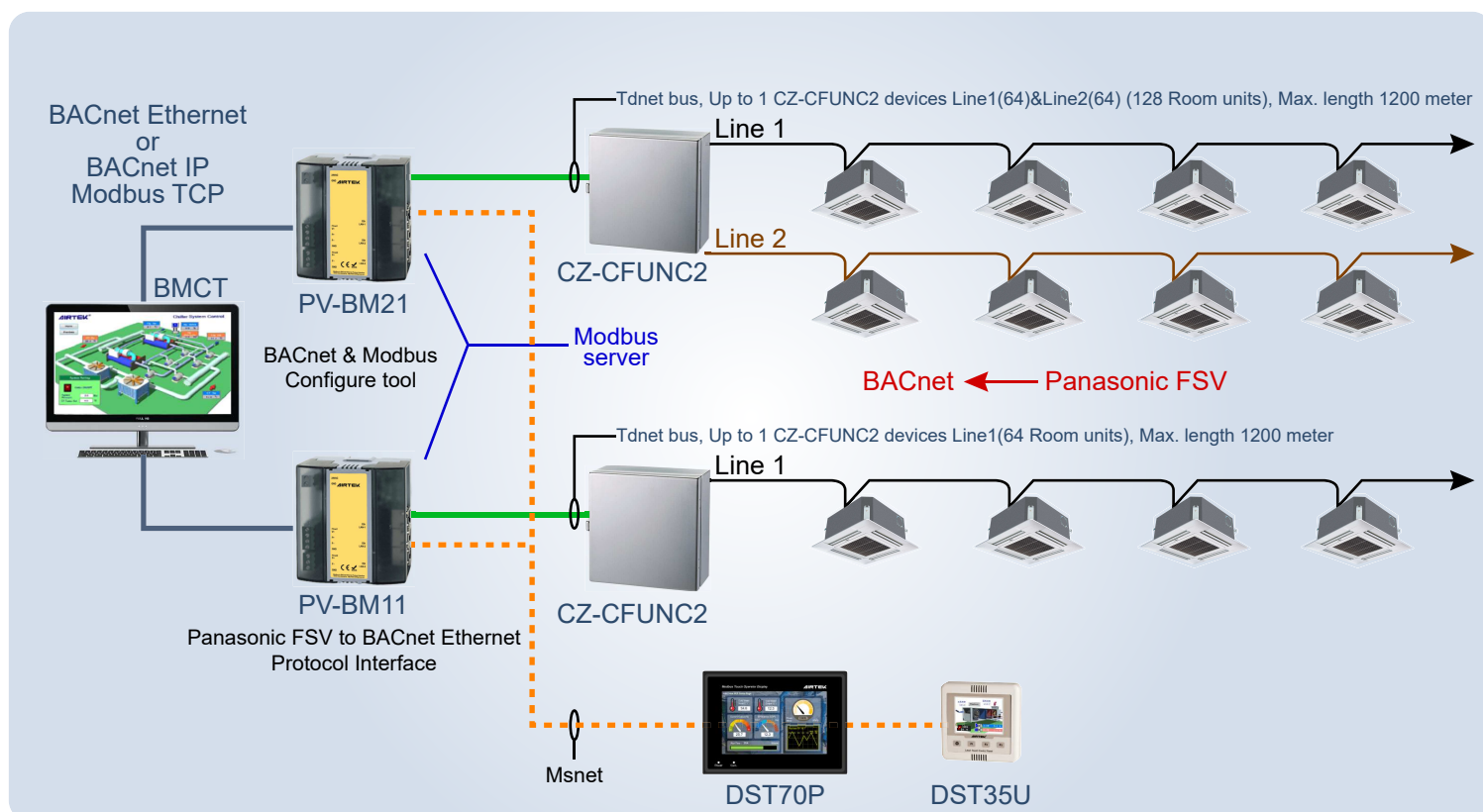
Product Info.

| Series difference | PC-MP11-XS/S/M/L(-N) | PC-ME11XS/S/M/L(-N) | PC-ME10-XS/S/M/L(-N) | PV-BM11/21 |
|----------------------|----------------------|---------------------|----------------------|---------------------------------|
| Function & spec | | | | |
| Modbus RTU | V | V | X | X |
| Modbus TCP Server | X | V | V | V |
| Modbus TCP Client | X | X | V | X |
| BACnet MSTP | V | X | X | X |
| BACnet Eth/IP | X | V | V | V |
| Panasonic VRF system | X | X | X | 1/2*Line for 64/128 indoor unit |

※ Point level = -XS: 100/ -S: 200/ -M:500 /-L: 1000

| Software resource | | | | |
|-------------------|-------|-------|-------|---|
| Alarm/Schedule | V (X) | V (X) | V (X) | X |
| Program | V (X) | V (X) | V (X) | X |

※ EIM = Expansion I/O module



 **Tel +886-2-26983311**

 **Fax +886-2-26983322**

 **19F. Suite 4, No. 77, Sec. 1, Xintai 5th Rd., Xizhi Dist., New Taipei City 22101, Taiwan**