

# Field Control Layer Device

# DST35U-(G)

## Individual LCD Touch Control Panel

### 【 Description 】

The DST35U/DST35U-G series LCD touch panel is designed to be used with MSnet of the AIRTEK series of microcomputer programmable controllers. It has a touch-sensitive LCD backlit screen that can graphically display the monitoring input points of the programmable controller (such as temperature and humidity). Sensing value, etc.), and touch operation to start, stop, change temperature and humidity settings, etc.), in addition to 4 function keys (⚙️ + F1 + F2 + F3), using 32-bit microprocessor manufacturing function super performance Superior, the transmission distance can reach 1,200 meters; the function of editing the page by AIRTEK BACsoft software is the same as the main monitoring system. No need to learn additional software. It has the function of displaying subtitles in simplified/traditional/English. It also has a simple and easy-to-use GUI (graphic use Refers to the interface) component, mounted on the MSnet network, allowing users to check the value or status of a single/multiple controllers at any time.



### 【 Features 】

- Made with 32-bit high-speed arithmetic microprocessor (MCU).
- 3.5" TFT LCD touch screen, full color 65,536 colors, resolution 320\*240 modules, display content can be programmed by AIRTEK BACsoft software. Simplified/Traditional/English operation menus with direct switching of menu settings.
- At the same time, it has simplified/traditional common fonts, and uses UTF-8 encoding. The screen can display both simplified and traditional characters at the same time according to the encoding content.
- There are four function keys ⚙️ + F1 + F2 + F3, among ⚙️ which are the system parameter setting keys. The three function keys F1, F2, and F3 can be used to plan the quick page jump function by themselves.
- With 6M Bytes of user image control data storage space, it can store 40 base images with the size of 320\*240 pictures with the extension file name .bmp.
- With online program and screen editing, debugging, downloading and online firmware update functions.
- The customized screen can be edited or changed online in real time through the BACsoft monitoring software.
- A variety of graphical user interface (GUI), in addition to provide meter, progress bar (Loading Bar), trend chart (Trend) and other real-time dynamic chart components.
- Read/write function of Present Value and Priority Array (1~16) of six BACnet standard objects (AI/AO/AV/BI/BO/BV).
- It has the function of alerting to jump to the specified display screen (Note: It is necessary to connect a controller with the ability to read and write external controller objects, such as a controller above AIRTEK B-AAC level). With historical alarm query function, you can view the latest 80 historical alarms.
- With 10 levels of password protection, up to 20 sets of passwords can be set to avoid improper operation by unauthorized personnel.
- The group control version (DST35U-G) can read and write up to 32 units through MSnet's RS-485 network.
- Hot-swappable design with PLUG-IN terminals for easy test drive adjustment.

### 【 Specification 】

| Model    | Port  | Protocol        | Size | Pixel         | Control Device |
|----------|-------|-----------------|------|---------------|----------------|
| DST35U   | MSnet | Airtek ViewPort | 3.5" | 320(V)*240(H) | 1              |
| DST35U-G | MSnet | Airtek ViewPort | 3.5" | 320(V)*240(H) | 32             |

**Power Supply** : 24VAC/DC, 1VA ◦

**LCD Display** : 3.5" screen, 65,536 color touch TFT LCD, resolution 320\*240 module.

**Microprocessor** : 32-bit high-speed microprocessor (MCU), containing 64K SRAM and 384K Flash memory. 8M font library and user data memory.

**MSnet Port** : RS-485, 9,600/19,200/38,400, 1,200 meters. The DST35U-G connect up to 32 controllers.

**USB Port** : Mini USB transfer interface, update firmware and download graphic control interface data.

**Clock** : Real-time Clock, gold capacitor power failure backup.

**Keys** : Four function keys. ⚙️ is system setting key. F1, F2, and F3 are the function keys.

**Buzzer** : For operation prompt and alarm prompt.

**Environment** : 0~50℃, 5~95%RH non condense.

**Certificate** : FCC, CE, RoHS

### 【 Accessory 】

**HMI-LINKER** : HMI-LINKER (Mini USB cable). Selectable, not included.

## 【 Installation 】

- Please read the catalog carefully before installation. Failure to follow the instructions in the catalog may cause danger or cause unpredictable results such as product damage.
- Do not connect the panel to the power supply during installation, because of the danger of electric shock or equipment damage, which may cause personal injury or damage the electrical circuit.
- Please install this control panel on the wall about 1.2 meters above the ground and in a location with good ventilation and circulation. Do not install it in a location that is directly exposed to heat, damp, dusty or vibrating, so as not to affect the control effect or product life.
- This control panel is suitable for installation on a double connection box with a width of 96mm \* a length of 100mm.
- When installing, fix the iron plate with screws first, then install the controller and push it down to fix it. When removing, operate in the reverse order.
- Please use 24VAC or 24VDC independent dedicated power supply. Do not use the 24VDC on the controller for power supply, and do not share the power supply with other equipment, so as to avoid the short circuit burnout caused by the difference in circuit design.
- MSnet communication network is recommended to use aluminum foil isolation shielding cable configuration above AWG22#4C, and wrap it with EMT metal conduit. Do not co-manage with power line or power line to avoid noise interference and obtain good communication effect.
- To download the graphic control screen, set the parameters or update the firmware version of the panel, you need to use the computer to run the BACsoft software to operate. Notice! Please unplug the external 24VAC/DC power supply before connecting to the computer, and then connect to the computer with a Mini USB cable, and switch to the 5VDC power supply of the computer's USB port, so that the computer and panel information can be transmitted smoothly.

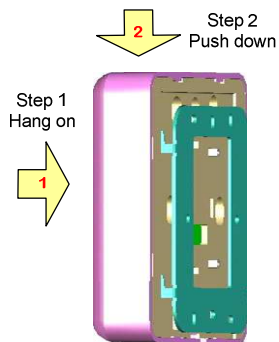


Fig. 1 Installation

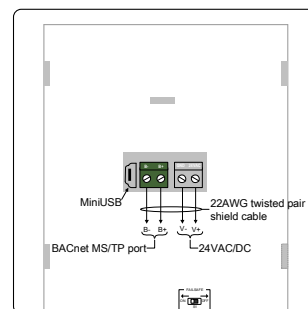
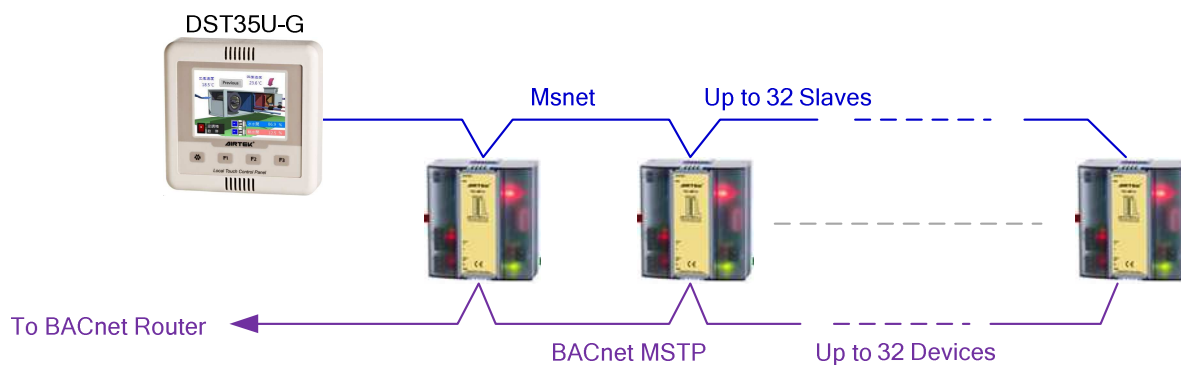


Fig. 2 DST35U Port

## 【 Network Architecture 】



## 【 Dimension 】 Unit: mm

